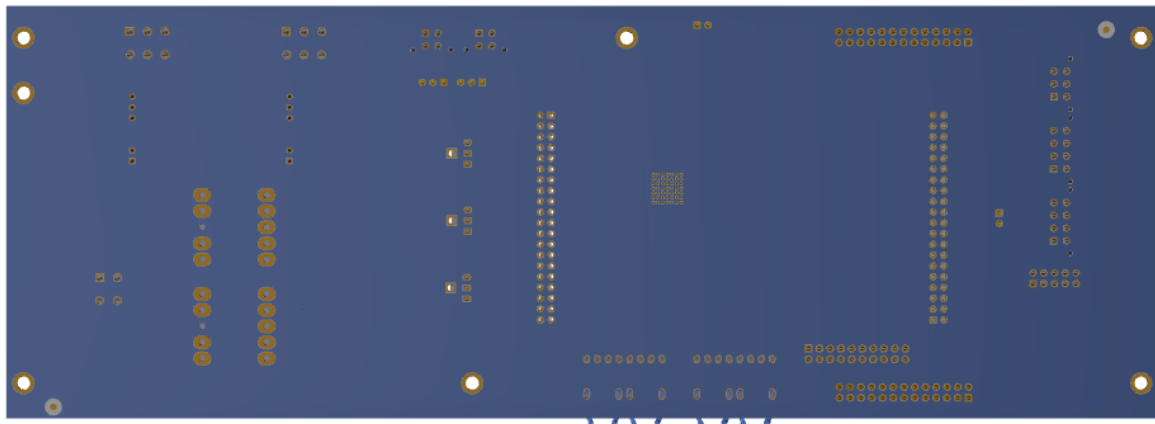
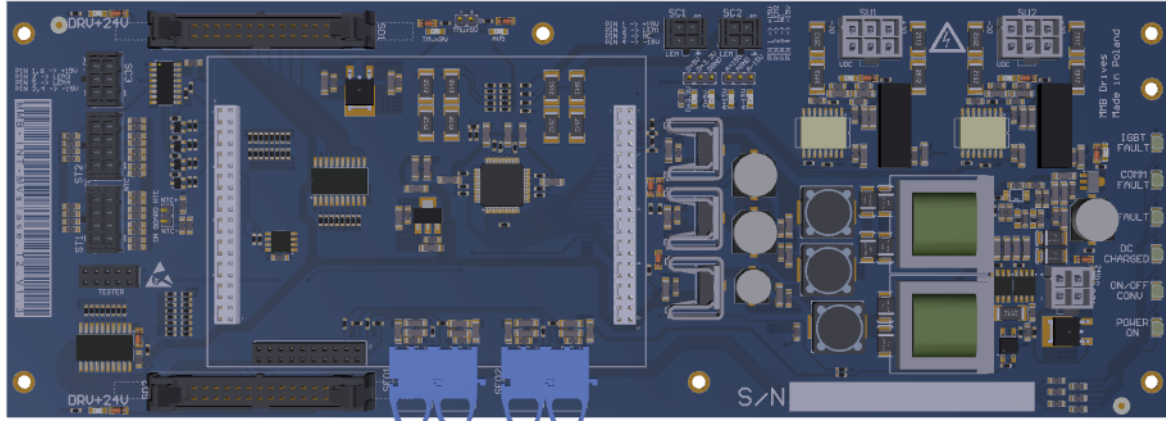


1. Rysunki poglądowe:



2. Specyfikacja:

Płyta interfejsów musi spełniać poniższe wymagania:

1. Obudowa:

a. Brak

2. Złącze zasilające:

a. Napięcie zasilania: + 24V DC

b. W postaci 4 pinowego złącza

3. Właściwości płyty interfejsu:

a. Złącza optyczne: 4 szt.

b. Wyjścia sterownika bramek: 16 szt.

c. Wejścia dla sygnałów błędów sterownika bramek: 16 szt.

d. Wejścia dla przetworników prądowych zasilanych napięciem symetrycznym +-15V: 4 szt.

e. Izolowane napięcie zasilania

f. Wejścia dla czujników temperatury: 8 szt.

g. Izolowane wejścia dla pomiarów napięcia 0-900V DC: 2szt

4. PCB:

a. Grubość: PCB 1.55mm

b. Warstwy: 4

c. Solder maska: zielona

d. Rodzaj wykończenia: złoczone

e. Opisy: białe (warstwa TOP)

f. Test elektryczny

5. Emisja zakłóceń elektromagnetycznych zgodna z normami europejskimi

6. Wymiary: 272mm x 97mm



Załącznik nr 6

2. BOM

MF	MFPN	Comment	Description	Designator	Quantity
OPTOSUPPLY	OSG5DAS1C1A-LM	OSG5DAS1C1A-LM	LED Diode	LED1, LED2	2
OPTOSUPPLY	OSR5MAS1C1A-LM	OSR5MAS1C1A-LM	LED Diode	LED3, LED4, LED5, LED6	4
KINGBRIGHT ELECTRONIC	KP-20125GC	KP-20125GC	LED Diode	LED7, LED8, LED9, LED10, LED11, LED12, LED13, LED14, LED15, LED16, LED17, LED18	12
FERYSTER	2753H607	EF20-HSP-SS-CPCI-CPKO	TRANSFORMER	T1, T2	2
ST MICROELECTRONICS	M24256-BWMN6TP	M24C02-WMN6P	EEPROM	U6	1
Maxim Integrated	MAX11046ETN+	MAX11046	Analog Digital Converter	U16	1
WURTH	177920534	177920534/WurthElektronik	Header	U21, U22	2
DC COMPONENTS	DL4148	LL4148	3 Amp Medium Power Silicon Rectifier Diode	D9, D10	2
TEXAS INSTRUMENTS	CD74HC4051M	74HC4051-SMD	Analog Multiplexer/Demultiplexer Single 8-Chan	U20	1
TEXAS INSTRUMENTS	SN74HCS41DW	74HCS41D	Buffer, octal, 3-state	U1, U2	2
MURATA	GRM2165C1H471JA01D	470pF	Capacitor Ceramic SMD	C56, C57	
MURATA	GRM188R71H223KA01D	22nF 25V	Capacitor Ceramic SMD	C1, C2, C3, C5, C6, C7, C8, C9, C10, C12, C13, C14, C15, C16, C17, C18	16
MURATA	GCM21BR71H104KA37L	100nF/50V	Capacitor Electrolytic SMD	C4, C11, C19, C23, C25, C27, C28, C29, OF1, C29, OF2, C34, OF1, C34, OF2, C37, C38, C39, C43, C44, C48, C51, C55, C86, C87, C92, C94, C95, C96, C97, C98, C99, C100, C101, C102, C106, C109, C111, C114, C123	37
PANASONIC	EEEFK1V331P	EEEFK1V331P/PANASONIC	Capacitor Electrolytic SMD	C21, C41, C46	3
PANASONIC	EEEFK1C471P	EEEFK1C471P/PANASONIC	Capacitor Electrolytic SMD	C53	1
MURATA	GCM21BR71H105KA03L	1uF/35V	Capacitor Electrolytic SMD	C49, C50	2
KEMET	C0805C181J5GAC	180pF/50V/COG PPA	Capacitor Electrolytic SMD	C116, C120, C122, C126	4
AVX	1206DD106KAT2A	10uF/35V	Capacitor Electrolytic SMD	C22, C24, C26, C30_OF1, C30_OF2, C31_OF1, C31_OF2, C32_OF1, C32_OF2, C33_OF1, C33_OF2, C35, C36, C40, C42, C45, C47, C52, C54, C83, C91, C93, C105, C107, C108, C110, C112, C113, C117, C123	30
MURATA	GRM1885C1H102JA01D	1nF/50V/COG	Capacitor Electrolytic SMD	C58, C63, C64, C65, C66, C67, C68, C70, C71, C104, C119, C125	12
FERROCORE	DE1207-330	DE1207-330	Coil Power SMD	L3, L4, L5	3
DC COMPONENTS	SK210	SK210	Diode	D1, D2, D3, D4, D5, D6, D7, D8	8
MURATA	BLM31PG601SN1L	BLM31PG601SN1L	Ferrite inductor SMD, Ferrite inductor SMD, Ferrite	L1_OF1, L1_OF2, L2_OF1, L2_OF2, L6	5
Avago	AFBR-2644Z	AFBR-2644Z	Fiber Optic Receiver	U7_OF1, U7_OF2	2
Avago	AFBR-1644Z	AFBR-1644Z	Fiber Optic Transmitter	U8_OF1, U8_OF2	2
VISHAY	NTCLE100E3472JB0	NTCLE100E3472JB0/VISHAY	Header, 2-Pin	P1	1
WURTH	61302021821	Header 10x2_1	Header, 20-Pin, Dual Row	Z2	1
WURTH	61304021821	Header 20x2	Header, 40-Pin, Dual Row	Z1, Z4	2
Analog Devices	AD7403	AD7403	Isolated Sigma-Delta Modulator	U23, U24	2
KEMET	C0603C104KSRAC	100nF/50V	Capacitor Electrolytic SMD	C59, C60, C62, C72, C74, C75, C76, C78, C79, C81	10
MURATA	GRM31CR61C226KE15L	22uF/10V	Capacitor Electrolytic SMD	C61, C69, C77, C80, C82, C132	6
TEXAS INSTRUMENTS	LM5030MMX/NOPB	LM5030	LM5030 100V Push-Pull Current Mode PWM C	U11	1
ST MICROELECTRONICS	LD1117533TR	LD1117533TR/ST_MICROELECT	LT1117-3.3 800mA Low Dropout Positive Regulato	U5	1
INFINEON (IRF)	IRF7853PBF	IRF7853	MOSFET-N	U14, U15	2
INFINEON (IRF)	IRLML0060TRPBF	IRLML0060TRPBF	N-Channel MOSFET	Q1, Q2, Q3, Q4	4
ON SEMICONDUCTOR	MC7915BTG	MC7915	Negative voltage regulator -15V	U12	1
INFINEON (IRF)	IRFR5505PBF	IRFR5505PBF	P-Channel MOSFET	Q7	1
ON SEMICONDUCTOR	MC7815CTG	7815	Positive voltage regulator +15V	U10	1
ST MICROELECTRONICS	L4940V05	L4940V5/ST	Positive voltage regulator +15V	U13	1
ROYAL OHM	SMD0603-220R	220R	Resistor SMD	R1, R2, R4, R8, R14, R15, R16, R17, R18, R21, R25, R29, R30, R31, R32,	16
ROYAL OHM	SMD0805-470R	470R	Resistor SMD	R34, R35	2
ROYAL OHM	SMD0805-330R	330R	Resistor SMD	R36, R37, R38, R39, R58	5
ROYAL OHM	SMD0805-2K2-1%	2k2/1%	Resistor SMD	R40, R110, R113, R116, R118, R120, R123, R125, R127	9
ROYAL OHM	SMD0805-1K5-1%	1k5/1%	Resistor SMD	R41, R69, R70, R109, R112, R115, R117, R119, R122, R124, R126	11
ROYAL OHM	SMD0603-1K5-1%	1k5/1%	Resistor SMD	R52, R53	2
ROYAL OHM	SMD0603-100R	100R	Resistor SMD	R54, R67, R102, R104, R106, R111, R128, R166	8
ROYAL OHM	SMD0603-330R	330R	Resistor SMD	R55, R56, R57, R66, R68	5
ROYAL OHM	SMD0603-4K7	4k7	Resistor SMD	R59, R60, R62_OF1, R62_OF2, R64_OF1, R64_OF2, R101, R105, R108, R121, R130, R141, R142, R153, R154, R167	16
ROYAL OHM	SMD0603-47R	47R	Resistor SMD	R61_OF1, R61_OF2, R63_OF1, R63_OF2, R72, R94, R96, R135, R140, R147, R152, R163	12
ROYAL OHM	SMD1206-10R	10R	Resistor SMD	R65	1
ROYAL OHM	SMD0805-30K	30k	Resistor SMD	R71	1
ROYAL OHM	SMD0805-47R	47R	Resistor SMD	R74, R75	2
ROYAL OHM	SMD1206-1R-1%	1R 1%	Resistor SMD	R79, R80, R81	3
ROYAL OHM	SP12-15R-1%	15R	Resistor SMD	R85, R87, R164, R165, R168, R169, R170, R171	8
ROYAL OHM	SP12-47K-1%	47k	Resistor SMD	R131, R132, R137, R138, R143, R144, R149, R150	8
ROYAL OHM	SMD0805-22R	22R	Resistor SMD	R133, R139, R145, R151	4
ROYAL OHM	SMD1206-27R-1%	27R/1%	Resistor SMD	R134, R136, R146, R148	4
ROYAL OHM	SMD0603-1K	1k	Resistor SMD	R3, R5, R6, R7, R9, R10, R11, R12, R13, R19, R20, R22, R23, R24, R26, R27, R28, R76, R77, R78, R83, R84, R86, R88, R89, R90, R91, R92, R93, R103, R107, R114, R129	33
ROYAL OHM	SMD2512-100R	100R	Resistor SMD	R73	1
LITEON	LTV-356T	TLP181	Optoisolator	U4	1
ST MICROELECTRONICS	L78L12ABU	L78L12ABU	Voltage Regulator	U9	1
ST MICROELECTRONICS	L78M09CDT-TR	L78M09CDT-TR	Voltage Regulator	U19	1
WURTH	61202622821	61202622821	WR-BHD 2.54mm Male Box Header With Lever	J1, J2	2
WURTH	64900421122	WE-4.20 mm Male Dual Row V	WR-MPC4 Mini power connector	C20	1
WURTH	64900621122	WE-4.20 mm Male Dual Row V	WR-MPC4 Mini power connector	C115, C121	2
WURTH	66200421122	WE-3.00 mm Micro Power Con	WR-MPC3 3.00 mm Male Dual Row Vertical Heade	C73, C84	2
WURTH	66200621122	WE-3.00 mm Micro Power Con	WR-MPC3 3.00 mm Male Dual Row Vertical Heade	C85	1
WURTH	66200821122	WE-3.00 mm Micro Power Con	WR-MPC3 3.00 mm Male Dual Row Vertical Heade	C88, C89	2
WURTH	61301021821	10p	WR-PHD 2.54 mm Dual Socket Header, 10p	J3	1
DC COMPONENTS	BZV55C2V4	2V4	Zener Diode	D11, D28, D210, D211	4
DC COMPONENTS	BZV55C3V3	BZV55C3V3	Zener Diode	D21	1
DC COMPONENTS	BZV55C20	20V	Zener Diode	D22, D23, D24	3
DC COMPONENTS	BZV55C12	12V	Zener Diode	D25, D27	2
DC COMPONENTS	BZV55C6V8	6V8	Zener Diode	D29	1
DC COMPONENTS	BZV55C9V1	9V1	Zener Diode	D26	1